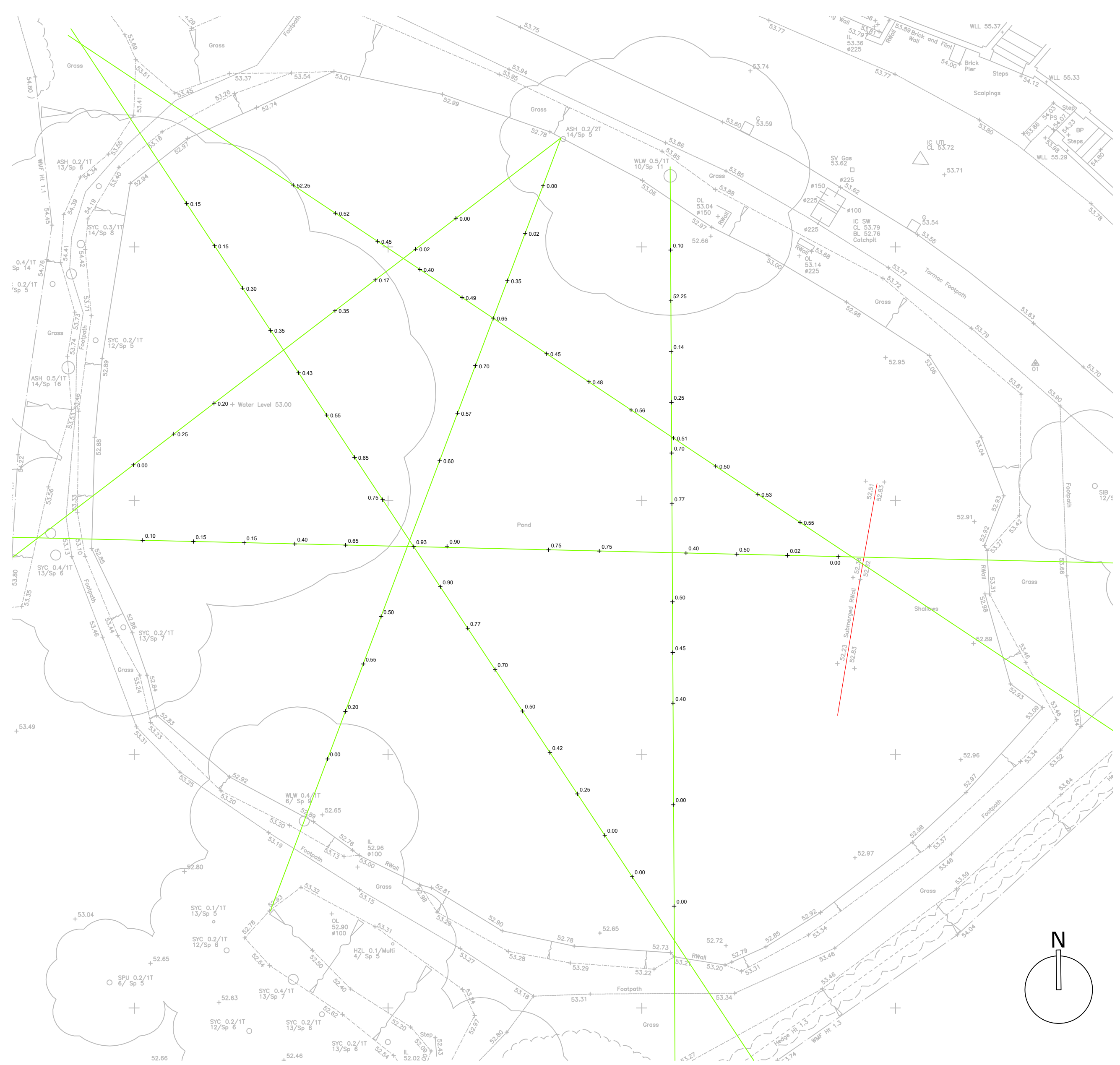


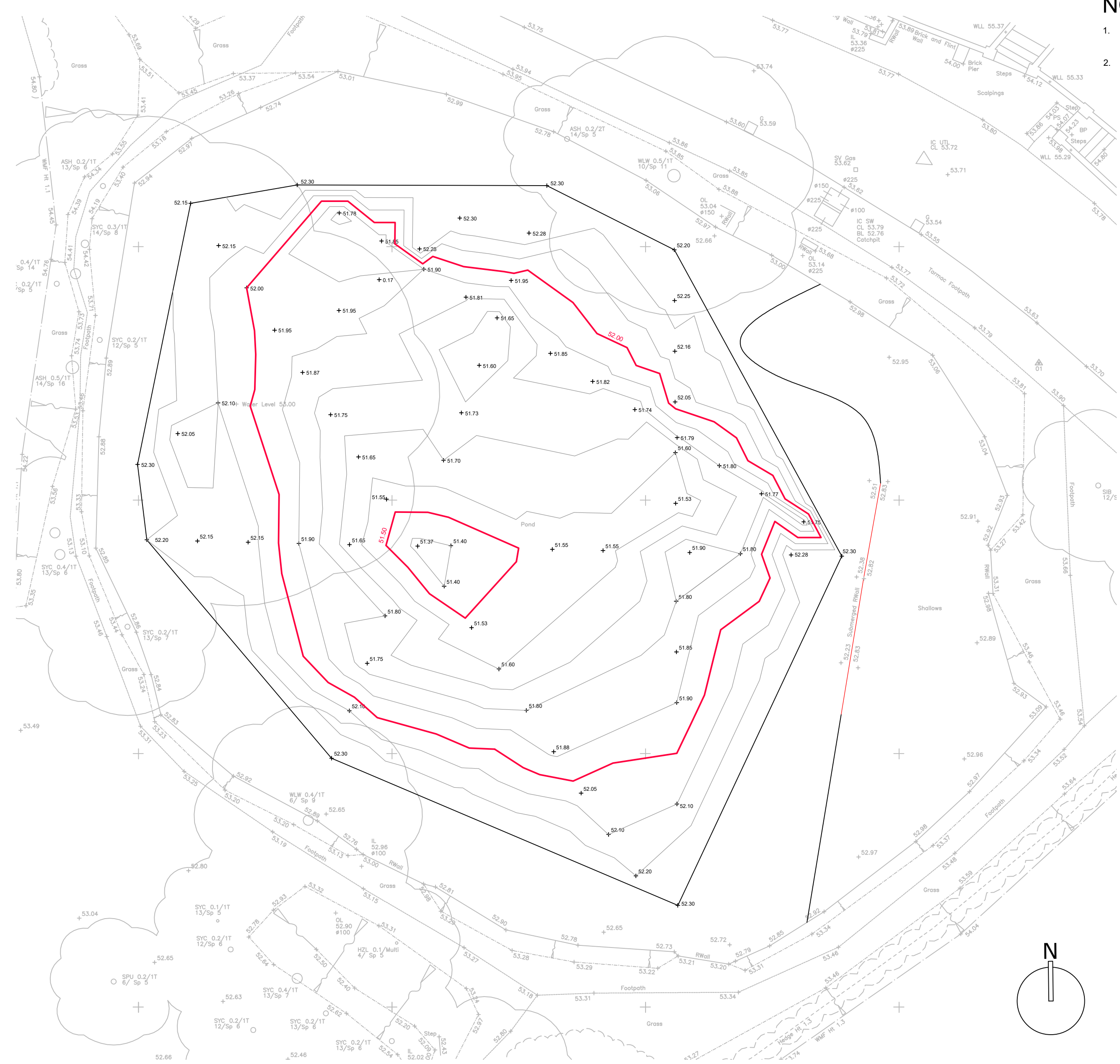
**NOTES**

1. This drawing is to be read in conjunction with drawing Nos. FC2890/01-25.
2. Existing onsite drainage is shown on drawing FC2890/01.



**Silt Depths (1:125)**

1. Based on Silt Depth Survey Information supplied by Southern Testing
  - 1.1. Report STL.J14617 dated 25/11/20
  - 1.2. Figures No 1 & 2
2. Positions shown approx - based on paper plans listed above



**Assumed Interpolated Pond Bed Levels (1:125)**

1. Based on Silt Depth Survey Information supplied by Southern Testing
  - 1.1. Report STL.J14617 dated 25/11/20
  - 1.2. Figures No 1 & 2
2. Positions shown approx - based on paper plans listed above

Note that it has been assumed that the top of the silt level is even, level and uniform within the pond. The pond base levels have been deduced from topographical survey levels taken at the edge of the pond. The lowest topo pond bed level (52.30) has been used to determine the level of the top of the silt as recorded in the STL survey corresponding to a silt depth of 0.0. Pond bed levels have thus been deduced by subtracting the silt depth recorded from the STL survey from the assumed top of silt level corresponding to a bed level of 52.30.

**NOTE THE FOLLOWING:**

1. Based on Silt Depth Survey Information supplied by Southern Testing
  - 1.1. Report STL.J14617 dated 25/11/20
  - 1.2. Figures No 1 & 2

Note that it has been assumed that the top of the silt level is even, level and uniform within the pond. The pond base levels have been deduced from topographical survey levels taken at the edge of the pond. The lowest topo pond bed level (52.30) has been used to determine the level of the top of the silt as recorded in the STL survey corresponding to a silt depth of 0.0. Pond bed levels have thus been deduced by subtracting the silt depth recorded from the STL survey from the assumed top of silt level corresponding to a bed level of 52.30. Volumes do not included level reduction within the pond 'Shallows' area.

**Preliminary Estimate of Silt within Pond based on Assumed Interpolated Pond Bed Levels (1:200)**

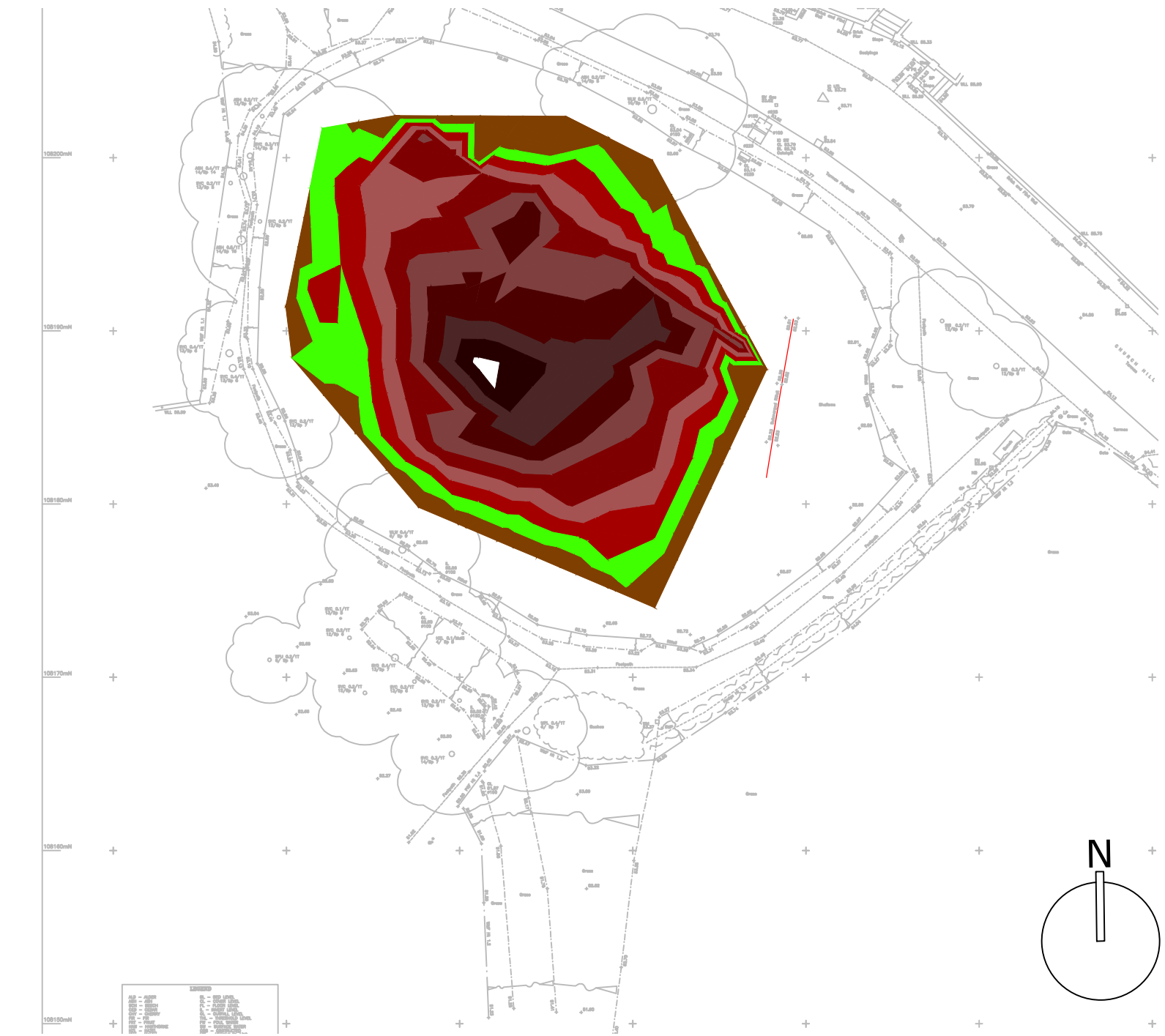
1. Based on Silt Depth Survey Information supplied by Southern Testing
  - 1.1. Report STL.J14617 dated 25/11/20
  - 1.2. Figures No 1 & 2
2. Positions shown approx - based on paper plans listed above

Note that it has been assumed that the top of the silt level is even, level and uniform within the pond. The pond base levels have been deduced from topographical survey levels taken at the edge of the pond. The lowest topo pond bed level (52.30) has been used to determine the level of the top of the silt as recorded in the STL survey corresponding to a silt depth of 0.0. Pond bed levels have thus been deduced by subtracting the silt depth recorded from the STL survey from the assumed top of silt level corresponding to a bed level of 52.30.

Preliminary Estimate of Silt Volume in Pond is approx 207m<sup>3</sup>  
 Note that this does not take into account  
 • any bulking up of the silt material which may occur once the silt is dug up  
 • any compaction of the silt that may occur once the pond has been drained.  
 It merely is a preliminary estimate of the volume between 52.30 (estimated top of silt level) and the estimated pond bed level below 52.30

**FILL Depth Bands**

Band 1	0.00 - 0.10	(53.00 - 52.90)
Band 2	0.10 - 0.20	(52.90 - 52.80)
Band 3	0.20 - 0.30	(52.80 - 52.70)
Band 4	0.30 - 0.40	(52.70 - 52.60)
Band 5	0.40 - 0.50	(52.60 - 52.50)
Band 6	0.50 - 0.60	(52.50 - 52.40)
Band 7	0.60 - 0.70	(52.40 - 52.30)
Band 8	0.70 - 0.80	(52.30 - 52.20)
Band 9	0.80 - 0.90	(52.20 - 52.10)



SUBJECT TO THE APPROVAL OF:  
 SDNP  
 WSCC/ADC - LLFA  
 SPC

A	Issued For BUDGET/APPROVAL ONLY	05/03/21
-	Issued For BUDGET/APPROVAL ONLY	29/01/21
REV	DESCRIPTION	DATE

**abmh**  
 ABMH Civils Ltd  
 1 The Grove, Felpham, Bognor Regis, West Sussex PO22 7EY  
 Mark Mob: 07761 950000  
 Email: mark@abmh.co.uk / Web: www.abmh.co.uk

PROJECT	SLINDON POND CHURCH HILL SLINDON, WEST SUSSEX BN18 0RD		
DRAWING	PRELIMINARY ESTIMATION OF POND BED LEVEL & SILT VOLUME (FOR INITIAL BUDGET ONLY)		
SCALE	FC2890/03	REV	A
VARIABLES	DATE	DEC 20	INITIAL
			MH
			CHKD

This drawing is produced using AutoCAD. Only written dimensions are to be respected.  
 © ABMH Civils Ltd. Title to this drawing remains with ABMH Civils Ltd.  
 Removal of this title block also removes all warranties and infringes copyright.